

MAY 2017 EDITION of

# CATCALL MAGAZINE



The Official Journal  
of CatsWA (Feline  
Control Council of  
WA (Inc))



**May 2017**

**Catcall is the OFFICIAL JOURNAL OF CatsWA**

Any opinions expressed in the magazine are the responsibility of the authors and do not necessarily reflect the opinions of CatsWA (the Feline Control Council of W.A. (Inc)) or the Editor.

**Advertising:**

CatsWA accepts no responsibility for the contents of advertisements. All advertisements are accepted in good faith and the advertising content is the responsibility of the advertiser.

Dear Members,

May we start by offering our apologies for missing the publication of the February edition of catcall, unfortunately, this was as a result of the change over of Editors during this time. Janis and I have recently taken over the publication of the journal and we will endeavor to ensure that all future editions will be published on time. It would be appreciated, by both of us, that should you have any articles or photographs you think might be of interest to our members please forward to me at [philsapple@inet.net.au](mailto:philsapple@inet.net.au).

Regards,

Phil & Janis Thompson  
Editors



## CatsWA CONTACT DETAILS

**Office address:** Unit 3/8 Royal Street, Kenwick WA 6107

**Office phone number:** (08) 9452 2885

**Office email:** [catswa@inet.net.au](mailto:catswa@inet.net.au)

**Website:** [www.fcc-wa.com](http://www.fcc-wa.com)

**Postal Address:** Post Office Box 915, Cannington WA 6107

**CatsWA Office is currently open on Wednesdays only. Please check before you call into the office as it is staffed by volunteers and sometimes they may not be available and we have to close the office at short notice.**

**When the office is not attended, you can leave a phone message or send an email and someone will get back to you.**

**If the matter is urgent, please contact the appropriate Council member directly.**

CatsWA Registrars                      Carole Galli , Margaret Bush

Titles and Office                         Judy Kluczniak 0403 524 172



**CATSWA / FELINE CONTROL COUNCIL OF WESTERN AUSTRALIA (INC)  
2017 ANNUAL GENERAL MEETING**

**HELD MONDAY 16<sup>th</sup> January 2017 IN THE FCCWA OFFICE, UNIT 3 / 8 ROYAL STREET,  
KENWICK, COMMENCING AT 7PM**

**MINUTES**

**WELCOME BY THE CHAIRMAN / PRESIDENT - CAROLE GALLI**

**1. ATTENDANCE**

Present: Carole Galli (President), Michelle Harris (Treasure), Maree Carle (Secretary), Lucy Nikiforos (Council Member), Susanne Goodall (Council Member), Judy Kluczniak (Council Member) and Janis Thompson (Council Member).  
Sandra Baraiolo, Dianne Nixon, Betty Payne, Sue Game, Julie Pickens, Linda Horton, Delaine Hall.

Apologies: Nil

**2. CONFIRMATION OF THE MINUTES**

Last AGM Meeting held on 8<sup>th</sup> January 2016.

**3. BUSINESS ARISING FROM THE MINUTES**

*Action:- Reducing fees for members coming over from another affiliation to be discussed at a normal Council meeting.*

*Action:- Pet Cats, new name and to reduce fees for entry to shows, to try and get more pet cats to enter.*

*Action:- L Plates on cages for new exhibits.*

**4. REPORTS**

**4.1 President - Carole Galli**

*Action:- Written report from Carole Galli – Accepted – Sandra Baraiolo, 2<sup>nd</sup> Everyone*

**4.2 Secretary – Maree Carle**

*Action:- Verbal report by Maree Carle – Accepted – Judy Kluczniak, 2<sup>nd</sup> Janis Thompson*

**4.3 Judge Training Coordinator – Betty Payne**

*Action:- Written report from Betty Payne – Accepted Janis Thompson, 2<sup>nd</sup> Suzanne Goodall.*

**4.4 Treasurer – Michelle Harris.**

*Action:- Handout of printed report by Michelle Harris. Diane Nixon questions the amount of the Strata Fees and why they had been reduced by \$2,000. Michelle Harris to check this out and report back.  
Accepted – Delaine Hall, 2<sup>nd</sup> Sue Game.*

**5. APPOINTMENTS / ELECTIONS**

**5.1 Governing Council**

Carole Galli (President) – Term Finishes end 2018.  
Lucy Nikiforos (Vice-President) – Term Finishes end of 2017.  
Maree Carle (Secretary) – Term Finishes end of 2018.  
Michelle Harris (Treasurer) – Term Finishes end of 2018.  
Janis Thompson (Councillor) – Term Finishes end of 2017.  
Judy Kluczniak (Councillor) – Term Finishes end of 2018.

**Two nominations have been received for 2017 for two vacancies:** Susan Goodall & Sue Game. The nominees were duly APPOINTED. CONGRATULATIONS extended to the appointees. The duration of their terms will be determined, and Office Bearers will be appointed for 2017 at the first Governing Council Meeting.

**5.2 Auditor for 2016**

*Action:- Still waiting for this to be completed.*

*Action:- Was agreed to continue with Susanne Whittle as the Auditor for 2017.*

**6. MOTIONS ON NOTICE**

**7. GENERAL BUSINESS**

**7.1 A letter received from Pamela Lanigan.**

Regarding discontinuing with the Cat of The Year Points for Non-CatsWA exhibits.

*Action:- It was decided to continue for at least another year.*

**8. CLOSE AND THANKS**

**Meeting closed at 8.45**



## **CatsWA Presidents Report 2016**

Dear Members,

2016 was a very successful year for CatsWA. We have had an active Governing Council who has worked together as a team to oversee our association as well as actively undertake fundraising and run shows.

### **Breeders**

We have maintained the number of breeders over the year with some older breeders retiring and several new breeders registering prefixes and purchasing breeding cats. Registration of kittens continues to be an issue with the association supported by only a small portion of those registered. We see adverts on Gumtree etc so we know that kittens are being sold but some seem to feel the cost of registration is too much. For these breeders, there can be no other label than registered BYB.

CatsWA is not here to legitimise unmonitored breeding and selling of kittens. This year, as registrar I am going to be monitoring registrations and if breeders are clearly breeding and selling kittens but not registering them Governing Council will need to consider the situation and make some decisions.

Registration of kittens was stable at 860 plus re-registration of cats adding another 45 registrations. As most breeders are very limited in the number of kittens they can breed since the introduction of the Cat Act and the number of members not registering kittens this is a pleasing result.

### **Shows**

Shows this year have been well attended with a consistent number of exhibitors. We have an exciting show calendar for this year with two international judges. Most shows will be three rings and there have been contracts issued for interstate judges for virtually every show. Shows will again be held predominantly at Cyril Jackson Hall in Bassendean. This venue has natural light, can accommodate all sized shows, and importantly has onsite storage for our cages etc which means we don't need to use the trailer.

We hope to see continued attendance at show by exhibitors from other associations and the COTY trophies for them were very well received. I personally hope we continue to improve cooperation between associations in the future.

### **Fund Raising**

Janis Thompson and her committee have been very busy again this year with kitchens at shows, sausage sizzles and other activities. We must continue to raise funds to subsidise the association's finances. Our only income is from memberships, kitten registrations/transfers and titles. To run the office is a huge cost and virtually uses all the membership and registration fees. The future financial viability of running the Office must be considered by members and Governing Council this year.

Many thanks to Janis and her team.

### **Judges Training**

Once again, this year Betty and Sue have been very dedicated in training new judges. Betty has provided a separate report but I would like to offer my sincere thanks to both Betty and Sue for their ongoing support. It is vital that new judges are trained and I encourage anyone interested in training to become involved in shows

through stewarding and admin to gain the necessary background. Betty and Sue will be happy to outline the requirements and pathways to becoming a judge. I sincerely hope that we see a new All Breeds judge qualify this year.

### Focus for 2017

- Financial security for CatsWA
- Strategies to increase kitten registrations and reduce BYB
- Ongoing development of strong show calendar
- Ongoing judges and stewards training
- Office to be open at least one day a week
- Strong and active Governing Council
- Increased membership and participation by existing members
- Open and inclusive culture

Carole Galli  
President



## Treasurers Report 2016

Dear CatsWA Members,

During 2016 Council approved and purchased a new accounting package, which was introduced around March. This took some time to navigate and input the data prior to its introduction but has proved to be an asset in the later part of the year. The tracking of payments and receipts has become more precise over the course of the year with members emailing their payment details through. There are still a few issues in this area, which will need to be addressed as we go forward.

As last year was somewhat unclear as to where some funds were to be allocated due to the National Show activity on the accounts and some members failing to provide details of transactions to the account it is difficult to be certain of how each area has fared this year, however it would appear that kitten registrations have remained stable. Show income along with cage sales have also indicated an increase in this year's annual report. Memberships have seen a slight decline but this may be a reflection on members not providing details and be accounted for in the unallocated funds.

Fundraising was restructured during 2016 with Janis now holding a petty cash amount to utilise and operate fundraising activities. There is currently 48 Oz Pet litter trays in stock for purchase. The canteen has continued to be well run, with the help of dedicated volunteers, and has continued to contribute to the fundraising efforts. Thanks go to Janis for organising these events and the people who step up to support these fundraising events and lend a hand.

I would like to extend my thanks to Carole and the Council for their patience and support while I nugged my way through the implementation of the new software, we are on the right path now.

Regards

Michelle Harris  
Treasurer CatsWA



# Important Notice to Members

## By-Law Amendment

### Membership Eligibility

CatsWA Governing Council met on 13 February 2017 and discussed a request from a member to Lease cats to another member of the same household who was a member of ANCATS. This request raised several issues as our conduct as a Registering body under the Cat Act 2011 requires a much higher level of accountability for our registered breeders. This issue has also been addressed by other registering bodies around Australia with increasing government levels of legislation around cat ownership as well as registration bodies' responsibility for the integrity of the pedigree records.

A pedigree kitten cannot be registered with two different bodies and CatsWA requires our breeders to register all kittens. CatsWA has a responsibility to provide oversight of our members in regards to cat ownership but most particularly of breeders to ensure the rules of CatsWA and the Cat Act 2011 are met.

In line with ACF and CCCA registration bodies CatsWA Governing Council passed rule at the meeting on 13 February 2017 that:

**“Members living in the same household must belong to only one registering body / association”.**

This decision was ratified in the meeting held on 30 March 2017 and becomes a Bylaw for Cats WA. The Breeders Code of Conduct will be updated; however, the rule applies from 13 February 2017.

The reasons for this decision are:

- CatsWA is expected to be responsible for monitoring our registered breeders and kitten registration and pedigrees.
- When kittens and cats are bred and sold by members of two associations from the same household, this is very difficult.
- Any complaint would be impossible to investigate, especially when two breeders from the same household are breeding the same breeds, possibly with the same cats
- Not all registering bodies are as strict as CatsWA and may allow activities (such as export or sale through agents), which would reflect badly on CatsWA and the membership.

**Governing Council**  
**31 March 2017**

## Our Sponsors



**NO MORE  
SMELLY BINS!**



**BIN BOMBS™**  
*Garbage Bin Deodorant Pellets*

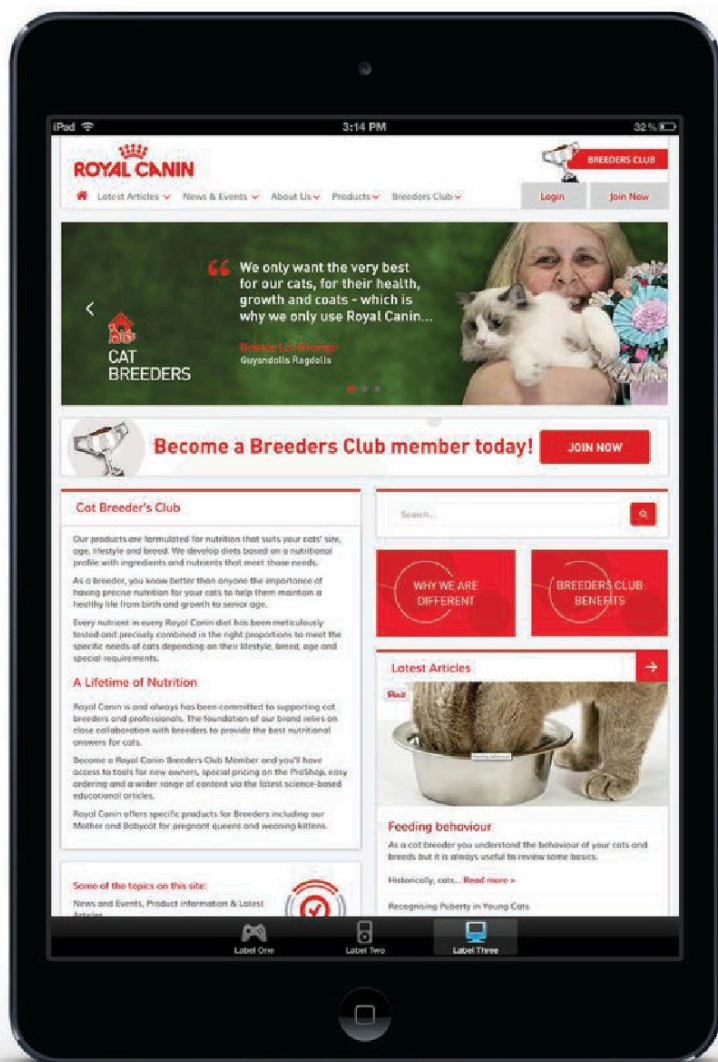
- Controls Unpleasant Bin Odours
- 1Kg Tub Lasts Up To 20 Weeks using 2 Level Scoops Weekly Per Wheelie Bin
- Fresh and Pleasant Fragrance
- 100% Natural Product
- Contains 100% Natural Insect Repellent
- Other Uses: Kitchen tidy bins, industrial waste bins, cars, smoking areas, smelly shoes, toilets, pet areas, kitty litter, dog poo bins, compost, and much more...



If you would like to know more about this fantastic product you can contact Paul Smith on 0421 962 979 or email [pasmith66@hotmail.com](mailto:pasmith66@hotmail.com)



INCREDIBLE IN EVERY DETAIL



Looking for  
articles,  
webinars  
and videos  
on Cat  
breeding,  
nutrition  
and more?

VISIT THE  
ROYAL CANIN  
BREEDERS  
WEBSITE

## JOIN OUR BREEDERS CLUB

- Online ordering
- Breeder Discounts
- Free Freight
- Kitten Packs
- Promotions
- Access to scientific articles

JOIN NOW



breeders.  
royalcanin  
.com.au



# CatsWA



## SUNDAY 26<sup>th</sup> March 2017 3 RING ALL BREEDS CHAMPIONSHIP SHOW RESULTS

	Ring One	Judge - Margaret Sim (NSW CFA) All Groups
Supreme In Ring	4	RICHDEAN HEART THROB - DEANNE KESTEL
Judges Fancy	33	CAROLANN PANDORA'S BOX - CAROL ERCEG
Best Litter In Show	37	SIAM JEWELS LITTER - DEBRA COPELAND
<b>Best Group One Exhibit</b>	4	RICHDEAN HEART THROB - DEANNE KESTEL
Best Group One Adult	4	RICHDEAN HEART THROB - DEANNE KESTEL
Reserve Group One Adult	8	MEWSINGS CHAMPAGNE SUPERNOVA - KIRSTY CONNELL
Third Group One Adult	3	NEVA ANGLES FACTOR X - JANIS THOMPSON
Best Group One Kitten	14	SUMMERSKYE PRINCESS ANNELIESE - SUSAN GOODALL
Reserve Group One Kitten	10	ALURE PRINCESS SNOWFLAKE - MARTYNA FURST
Third Group One Kitten	18	ZHIVAGO SHARLA - JANIS THOMPSON
Best Group One Desex	25	MEWSINGS SWEET MELODY - SUZANNE WEBB
Reserve Group One Desex	24	LOVEUFOREVER MR BENJAMIN - JUDY KLUCZNAIK
<b>Best Group Two Exhibit</b>	33	CAROLANN PANDORA'S BOX - CAROL ERCEG
Best Group Two Adult	31	CHICAS QUEENIE - SUSAN GAME
Reserve Group Two Adult	27	CAROLANN EBONY QUEEN OF POP - CAROL ERCEG
Best Group Two Kitten	33	CAROLANN PANDORA'S BOX - CAROL ERCEG
Reserve Group Two Kitten	34	CHICAS BABYCHAMPERS - SUSAN GAME
Best Group Two Desex	42	MALINGBU SEAL SHAJHAN - DEBRA COPELAND
Reserve Group Two Desex	40	CHICAS HEARTBEAT - SUSAN GAME
<b>Best Group Three Exhibit</b>	63	RAVENCLAW LUCINDA KARMA - CAROLE GALLI &
Best Group Three Adult	50	KIMARA TIARA DAZZLING STAR - LUCY NIKIFOROS
Reserve Group Three Adult	46	KIMARA METALLICA BLU SUMFIN SPECIAL - LUCY NIKIFOROS
Third Group Three Adult	43	JOYLINCAR LOVE'S VERSE - CAROLE CARROLL
Fourth Group Three Adult	49	TACHALI CONTESSA TATIANA - MAREE CARLE &
Fifth Group Three Adult	56	JOYLINCAR STORM IN A TEACUP - CAROLE CARROLL
Sixth Group Three Adult	52	GOLASH BLU BAYOU - MILENA GOULD
Best Group Three Kitten	63	RAVENCLAW LUCINDA KARMA - CAROLE GALLI &
Reserve Group Three Kitten	64	TACHALI REGAL ATHENA - MAREE CARLE &
Third Group Three Kitten	68	METEBELIS ARYA STARK - ROSEMARY MULCAHY
Fourth Group Three Kitten	60	RIORDAN IF LOOKS COULD KILL - NICK SKEET
Best Group Three Desex	76	TACHALI PRINCESS OPAL - MAREE CARLE &
Reserve Group Three Desex	80	JOYLINCAR SUN GOD AMUN RA - LYNNE MOORMAN
Third Group Three Desex	78	BLUEBEBOP JOHANN STRAUSS - BARBARA JOHNSON
Best Russian Exhibit	50	KIMARA TIARA DAZZLING STAR - LUCY NIKIFOROS
<b>Best Group Four Exhibit</b>	82	WONKY - MAREE CARLE &
Reserve Group Four Exhibit	86	LALA LORD OF THE RINGS - SANDRA HAYES
Third Group Four Exhibit	83	MOKA - CHERISE DAY & TRACEY DAY

	<b>Ring Two</b>	<b>Judge - Joanne Millar (NZCF) All Groups</b>
Supreme In Ring	46	KIMARA METALLICA BLU SUMFIN SPECIAL - LUCY NIKIFOROS
Judges Fancy	74	MESMEREYES SILVER SENDRE - CAROLE GALLI &
Best Litter In Show	37	SIAM JEWELS LITTER - DEBRA COPELAND
<b>Best Group One Exhibit</b>	3	NEVA ANGLES FACTOR X - JANIS THOMPSON
Best Group One Adult	3	NEVA ANGLES FACTOR X - JANIS THOMPSON
Reserve Group One Adult	4	RICHDEAN HEART THROB - DEANNE KESTEL
Third Group One Adult	6	FURRBALLZ MELBOURNE STORM - KIRSTY CONNELL
Best Group One Kitten	14	SUMMERSKYE PRINCESS ANNELIESE - SUSAN GOODALL
Reserve Group One Kitten	17	ZHIVAGO AMBER DELIGHT - JANIS THOMPSON
Third Group One Kitten	10	ALURE PRINCESS SNOWFLAKE - MARTYNA FURST
Best Group One Desex	23	MEWSINGS EDGE OF GLORY - KINABALU CATTERY &
Reserve Group One Desex	26	GD CH MIASIBKA MIDAS - JUDY KLUCZNAIK
<b>Best Group Two Exhibit</b>	38	XANTHUS K - JANET F BORNMAN
Best Group Two Adult	27	CAROLANN EBONY QUEEN OF POP - CAROL ERCEG
Reserve Group Two Adult	29	BAJIMBI CLASSIC BEXTA - CAROL ERCEG
Best Group Two Kitten	35	EVEREST RED LABEL - JANET STERRY
Reserve Group Two Kitten	33	CAROLANN PANDORA'S BOX - CAROL ERCEG
Best Group Two Desex	38	XANTHUS K - JANET F BORNMAN
Reserve Group Two Desex	41	BAJIMBI CLASSIC PERFECT PRINT - GRAEME & WENDY BLACK
<b>Best Group Three Exhibit</b>	46	KIMARA METALLICA BLU SUMFIN SPECIAL - LUCY NIKIFOROS
Best Group Three Adult	46	KIMARA METALLICA BLU SUMFIN SPECIAL - LUCY NIKIFOROS
Reserve Group Three Adult	50	KIMARA TIARA DAZZLING STAR - LUCY NIKIFOROS
Third Group Three Adult	43	JOYLINCAR LOVE'S VERSE - CAROLE CARROLL
Fourth Group Three Adult	45	AZREAL WALHALLA WARRIOR (IMP SA) - MILENA GOULD
Fifth Group Three Adult	49	TACHALI CONTESSA TATIANA - MAREE CARLE &
Sixth Group Three Adult	56	JOYLINCAR STORM IN A TEACUP - CAROLE CARROLL
Best Group Three Kitten	61	BAJIMBI STANDING OVATION - CAROL ERCEG
Reserve Group Three Kitten	64	TACHALI REGAL ATHENA - MAREE CARLE &
Third Group Three Kitten	68	METEBELIS ARYA STARK - ROSEMARY MULCAHY
Fourth Group Three Kitten	63	RAVENCLAW LUCINDA KARMA - CAROLE GALLI &
Best Group Three Desex	72	OSIRIS (V) MINECRAFT WARRIER - VICTORIA CAYLEY
Reserve Group Three Desex	80	JOYLINCAR SUN GOD AMUN RA - LYNNE MOORMAN
Third Group Three Desex	78	BLUEBEBOP JOHANN STRAUSS - BARBARA JOHNSON
Best Russian Exhibit	46	KIMARA METALLICA BLU SUMFIN SPECIAL - LUCY NIKIFOROS
<b>Best Group Four Exhibit</b>	82	WONKY - MAREE CARLE &
Reserve Group Four Exhibit	83	MOKA - CHERISE DAY & TRACEY DAY
Third Group Four Exhibit	86	LALA LORD OF THE RINGS - SANDRA HAYES

	Ring Three	Judges - Betty Payne (CatsWA) Group 1, Carole Galli (CatsWA) Group 2 and Group 3 Entire, Lucy Nikiforos (CatsWA) Group 3 Kittens), Nick Skeet (CatsWA) Group 3 Desexed and Group 4
Supreme In Ring	9	ZHIVAGO PRINCE HARRY - JANIS THOMPSON
Judges Fancy		#N/A
Best Litter In Show	71	TACHALI LITTER (2) - MAREE CARLE &
<b>Best Group One Exhibit</b>	9	ZHIVAGO PRINCE HARRY - JANIS THOMPSON
Best Group One Adult	9	ZHIVAGO PRINCE HARRY - JANIS THOMPSON
Reserve Group One Adult	4	RICHDEAN HEART THROB - DEANNE KESTEL
Third Group One Adult	8	MEWSINGS CHAMPAGNE SUPERNOVA - KIRSTY CONNELL
Best Group One Kitten	16	SINANVANYA LILYBELLE - MICHELLE HARRIS
Reserve Group One Kitten	10	ALURE PRINCESS SNOWFLAKE - MARTYNA FURST
Third Group One Kitten	18	ZHIVAGO SHARLA - JANIS THOMPSON
Best Group One Desex	25	MEWSINGS SWEET MELODY - SUZANNE WEBB
Reserve Group One Desex	23	MEWSINGS EDGE OF GLORY - KINABALU CATTERY &
<b>Best Group Two Exhibit</b>	28	SIAROD FRECOSO - SUSAN GAME
Best Group Two Adult	28	SIAROD FRECOSO - SUSAN GAME
Reserve Group Two Adult	29	BAJIMBI CLASSIC BEXTA - CAROL ERCEG
Best Group Two Kitten	34	CHICAS BABYCHAMPERS - SUSAN GAME
Reserve Group Two Kitten	35	EVEREST RED LABEL - JANET STERRY
Best Group Two Desex	41	BAJIMBI CLASSIC PERFECT PRINT - GRAEME & WENDY BLACK
Reserve Group Two Desex	42	MALINGBU SEAL SHAJHAN - DEBRA COPELAND
<b>Best Group Three Exhibit</b>	76	TACHALI PRINCESS OPAL - MAREE CARLE &
Best Group Three Adult	43	JOYLINCAR LOVE'S VERSE - CAROLE CARROLL
Reserve Group Three Adult	58	AMENOPHIS MAJONG - SHARON WOOD &
Third Group Three Adult	46	KIMARA METALLICA BLU SUMFIN SPECIAL - LUCY NIKIFOROS
Fourth Group Three Adult	52	GOLASH BLU BAYOU - MILENA GOULD
Fifth Group Three Adult	56	JOYLINCAR STORM IN A TEACUP - CAROLE CARROLL
Sixth Group Three Adult	54	TWILI CATTY NOIR - AMBER MCALLAN
Best Group Three Kitten	64	TACHALI REGAL ATHENA - MAREE CARLE &
Reserve Group Three Kitten	68	METEBELIS ARYA STARK - ROSEMARY MULCAHY
Third Group Three Kitten	61	BAJIMBI STANDING OVATION - CAROL ERCEG
Fourth Group Three Kitten	62	RAVENCLAW MYSTIC MAGIC - CAROLE GALLI &
Best Group Three Desex	76	TACHALI PRINCESS OPAL - MAREE CARLE &
Reserve Group Three Desex	72	OSIRIS (V) MINECRAFT WARRIER - VICTORIA CAYLEY
Third Group Three Desex	80	JOYLINCAR SUN GOD AMUN RA - LYNNE MOORMAN
Best Russian Exhibit		#N/A
<b>Best Group Four Exhibit</b>	83	MOKA - CHERISE DAY & TRACEY DAY
Reserve Group Four Exhibit	81	PRINCESS KATNISS - LISA SMITH
Third Group Four Exhibit	86	LALA LORD OF THE RINGS - SANDRA HAYES

#### Gifts, Donations & Thanks

Thank you to the generous people who donated towards this show.

**Deanne Kestel, Lynn Moorman, Sue Game, Victoria Cayley & Wendy Black**

Thank you also to everyone who donated time and helped with set up and in other ways. It is greatly appreciated.



  
**ROYAL CANIN**



  
**ROYAL CANIN**





# CatsWA JUDGES

## Code of Conduct for all members

Did you know that CatsWA has a code of conduct?

A code of conduct is really important because it acts as a guide and reference for all members. It helps to clarify CatsWA's values and principles and is a visible statement to the rest of the world what we stand for. Anyone who deals with CatsWA can look at our Code of Conduct and they will get a sense of who we are and what is important to us. Our Code of Conduct incorporates the standard of ethics that our breeders abide by and provides a reference point for Governing Council when they are dealing with any situations that may arise.

The full code of conduct can be found on our website [www.fcc-wa.com](http://www.fcc-wa.com)

### **General Principles of Conduct**

General principles to guide the behaviour of CatsWA members include that all members must:

- a) Act with reasonable care and diligence
- b) Act with honesty and integrity
- c) Act lawfully
- d) Avoid damage to the reputation of the CatsWA
- e) Treat others with respect and fairness.
- f) Abide by any rules, regulations or guidelines as determined by CatsWA including Breeding, Showing, membership of Governing Council or any other activity. Such regulations will be available on the CatsWA website.
- g) Comply with the WA Cat Act (2011) and any other relevant legislation.

Don't forget to keep an eye out on our website for news, updates and show schedules. Our kitten page, is an extension of the breeder's directory, and helps to link those breeders who are registering kittens with potential kitten buyers.

[www.fcc-wa.com](http://www.fcc-wa.com)

## Looking for ways to get involved?

Why not join one of the clubs? CatsWA has several clubs, which are a great way to get to know people. Clubs run the shows and are always happy for people to come along and learn how a show works.

<b>British Shorthair Cat Club</b> Sec: Pamela Lanigan 0419 940 025	<b>Oriental Shorthair Cat Club</b> Sec: Susan Game 0409 082 395
<b>Feline All Breeds Society (Inc)</b> Sec: Margaret Bush (08) 9535 3239	<b>Southern and Siamese Cat Club</b> TBC
<b>Paws and Claws Cat Club</b> Sec: Linda Horton Mob: 0431 487 841	<b>W.A. Cat Club</b> Sec: Maree Carle Mob: 0408 925 205
<b>W.A. Shorthair Cat Club</b> Sec: Helen Colleran (08) 9459 8982	

## Show the dates

<b>May 27, 2017</b>	CatsWA Show— 2 rings, Fiona Cooper CatsNSW
<b>June 25, 2017</b>	CatsWA Show—International Judge & Nick Tricarico GCCFV
<b>July 16 2017</b>	CatsWA Show—International Judge and Janis Christison QFA
<b>August 27, 2017</b>	OSCC Show - Three Rings CatsWA Judges
<b>September 10, 2017</b>	BSH Show
<b>September 23-30, 2017</b>	Perth Royal Show - Cat Championships & Other Events
<b>October 23, 2017</b>	CatsWA/WA Cat Club show—Judy Lewis QFA, Lesley Morgan CAT, Hazel Rossiter CatsNSW
<b>December 2, 2017</b>	Osborne Park Agricultural Show

# Fees and charges

Annual renewal of Membership is due on 1<sup>st</sup> November each year

## Membership

	Yr	5 Yr
Joint membership	\$70	\$280
Single membership	\$50	\$200
Single Pensioner or associate	\$25	\$100
Joint Pensioner or associate	\$35	\$100
Junior (under 18)	\$25	\$100

## Prefix

Initial application	\$25
Renewal (annual)	\$15
Transfers (single/joint or vice versa)	\$10
Transfer from other body	\$10

## Breeders Directory

Per entry	\$15
-----------	------

## Registrations

Per kitten within 70 days of birth	\$10
Late fees ( <b>per wk/part wk per kitten</b> )	\$2
Pet Cat	\$10
Corrections to registrations	\$8
Duplicate copies of registrations	\$8
Copy of pedigree	\$8

## Re-registration

Cat registered with another body in WA	\$10
Cat registered outside of WA but within Australia	\$25
Cat registered outside of Australia	\$50

Cats *MUST* be transferred into your name with the other Body before they can be re-registered with CatsWA (Inc). Please Note: Cats and kittens cannot be shown in your name until the re-registration has been affected in our records.

## Transfers

Initial transfer – non breeding	Nil
Initial transfer – breeding	\$30
Subsequent transfers – Members	\$6
Subsequent transfers – Non-members	\$10

## Titles

Title confirmation	\$10
Title with ribbon	\$25
Supreme Title inc. ribbon	\$25
ACF AoE (payable too ACF Inc)	\$25

## Clubs

Nomination for Affiliation	\$30
Affiliation inc. insurance	\$200
Printing own award certs (per ring)	\$15

## Shows

Challenge/Award of Merit Certs.	\$0.65
Standard of Points	Tba

## Catcall (Membership includes Catcall)

<i>Free downloads from CatsWA Inc website</i>	
Members extra copies posted	\$6.50
Non-members within Australia	\$18

## Advertising Rates

	Page Size	Per Issue	4 Issues
<i>Members</i>			
Full		\$32	\$110
Half		\$20	\$70
Quarter		\$12	\$40
<i>Commercial</i>			
Full		\$80	\$300
Half		\$50	\$180
Quarter		\$30	\$100
Rear Cover		\$120	\$400
Inside Rear		\$100	\$340
Inside Front		\$100	\$340

Members of ACF (Inc) Affiliates (includes relevant issues posted)

Full	\$50	\$180
Half	\$30	\$100
Quarter	\$12	\$36
Stud Listing	per issue	\$15
Artwork	Add	\$10

## Leases

Recorded in CatsWA (Inc) records	\$15
----------------------------------	------

## Certified Pedigrees

Members (5 generations)	\$35
Members (4 generations)	\$20
Non-members (4 generations)	\$30

Some of these clubs are no longer active or have changed office bearers. Please contact the editor at [catswa@iinet.net.au](mailto:catswa@iinet.net.au) to update your information.

Any club news? Here is the place to list it.

### **2017 Governing Council Members**

<b>President</b>	Carole Galli (08) 9455 1481
<b>Vice President</b>	Lucy Nikiforos (08) 9419 7473
<b>Secretary</b>	Maree Carle 0408 925 205
<b>Treasurer</b>	Michelle Harris 0413 394 625
<b>Councillors</b>	Janis Thompson, Judy Kluczniak, Susan Goodall, Susan Game

### **Sub-Committees & Convenors**

Judge Training	Susan Game (0409 082 395) and Betty Payne (08) 9525 0071
Experimental Breeding	Susan Game
Steward Training	Susan Game
Cat Act 2011	Linda Horton
Fundraising and grants	Janis Thompson
Show Cages	Carole Galli
Cat of the Year points	Linda Horton
Cat Call Editors	Philip & Janis Thompson
Website	Maree Carle and Linda Horton

### **CATSWA JUDGES**

<b>MARGARET BUSH</b> (08) 9535 3239 <a href="mailto:margaret_bush@outlook.com">margaret_bush@outlook.com</a>	<b>ALL BREEDS</b>	<b>PAMELA LANIGAN</b> 0419 940 025 <a href="mailto:cuddleton@optiic.com">cuddleton@optiic.com</a>	<b>GROUP 2 &amp; 3</b>
<b>JENNY CASOTTI</b> (08) 9295 2658 <a href="mailto:purrever@bigpond.com">purrever@bigpond.com</a>	<b>GROUP 3</b>	<b>LUCY NIKIFOROS</b> (08) 9419 7473 <a href="mailto:kimara@iinet.net.au">kimara@iinet.net.au</a>	<b>GROUP 2 &amp; 3</b>
<b>CAROLE GALLI</b> <b>(08) 9455 1481</b> <a href="mailto:admin@roellencattery.com.au">admin@roellencattery.com.au</a>	<b>GROUP 2 &amp; 3</b>	<b>BETTY PAYNE</b> (09) 9525 0071 <a href="mailto:pyret@bigpond.net.au">pyret@bigpond.net.au</a>	<b>ALL BREEDS</b>
<b>SUSAN GAME</b> 0409 082 395 <a href="mailto:ssgame@iinet.net.au">ssgame@iinet.net.au</a>	<b>ALL BREEDS</b>	<b>LEE-ANNE PITMAN-PRYDE</b> 0423 115 533 <a href="mailto:kinabalu15@virginbroadband.com.au">kinabalu15@virginbroadband.com.au</a>	<b>GROUPS 1 &amp; 3</b>
<b>JANE HORSTMAN</b> (08) 9386 4135 <a href="mailto:ameraust2@aol.com">ameraust2@aol.com</a>	<b>GROUPS 1 &amp; 3</b>	<b>NICK SKEET</b> 0423 821303 <a href="mailto:riordanburmese@yahoo.com.au">riordanburmese@yahoo.com.au</a>	<b>GROUP 3</b>

## TRAINEE CATSWA JUDGES

MICHELLE HARRIS	GROUP 1	KIRSTY CONNELL	GROUP 1
LEE-ANNE PITMAN PRYDE	GROUP 2	NICK SKEET	GROUP 2

All judges may judge group 4.

Members wishing to become judges are welcome to contact Judge Training Conveners Susan Game or Betty Payne where they will be given full support and encouragement.

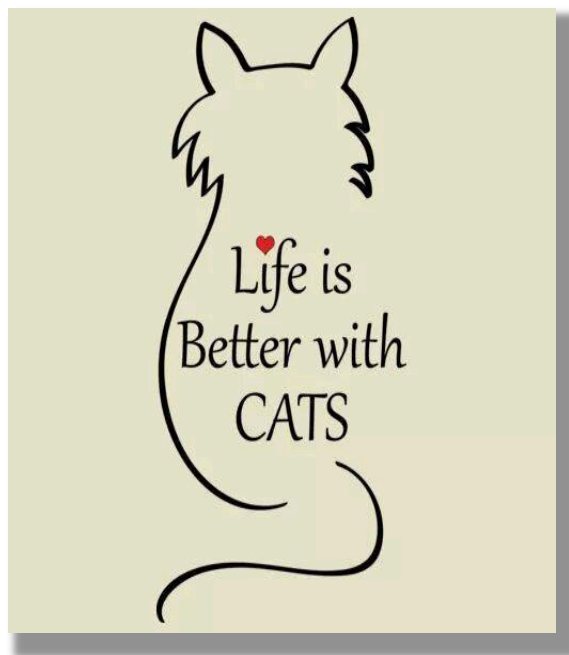
## CATSWA STEWARD TRAINING

Stewards play a very important role in our shows and accreditation courses are conducted during the year. Contact Susan Game – 0409 082 395.

---

## Welcome to our New Members

Erin Moody, Lisa Smith, Janet Bornman,  
Lisa McBean,  
Paul & Monique Whitty and  
Nikki & Dean Mann





Come down and see our spacious new and well-equipped hospital for both routine and more specialised treatments.

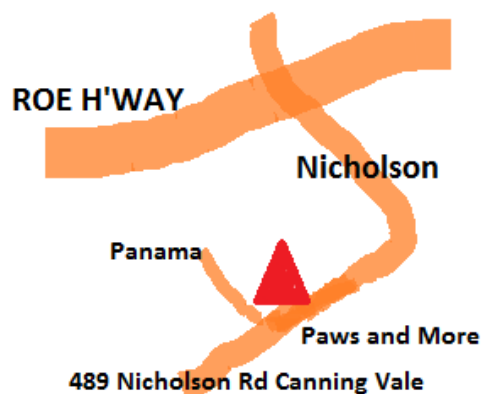
Meet our friendly and caring vets **Dr Carrie Marsh** and **Dr Henry Chung** for superb quality care at very **special** breeder prices.

Visiting consultant ophthalmologist (Dr. Rob Harris) and consultant surgeon (Dr. Michael Gibbs) for complex cases.

In house lab for quick results. Digital radiography. Dedicated surgical theatres.

Neutering from 8 weeks. Premium Boehringer vaccines. Quality mini microchips

Centrally located in Canning Vale with easy access off Nicholson Road and ample parking.



**CALL 9455 1310**

489 Nicholson Road, Canning Vale 6155



# A First Timers Guide To Showing Your Cat

Before the show fill in the entry form with your cats details and choose the classes you want to compete in, i.e. adult, kitten, neutered etc. You can go in more than one class and there are often subclasses such as born interstate or showed by breeder.

It is best to call the show organizer if you are not sure what to put down on the form. They will be happy to help because newbie's are always welcomed.

Once you have registered all you need to do then is get your stuff together and show up with your kitty.

I take the following

- Claw clippers
- Water & food dishes (everyone had the ones that clip onto birdcages but normal ones are fine)
- A small plastic container for litter (a large flat lunchbox from a \$2 shop is fine)
- Some dry food and a water bottle
- A few toys
- Cage curtains (find out what size and how to make them from your club or borrow a set from your cats breeder)
- Something soft for the bottom of the cage
- Frozen brick if it is a warm day/hot water bottle if it is a cold day (put them in the cage if you need to)

When you arrive you have to have you cat checked over by the vet. They will okay it to be shown. Then you go to your assigned cage, put your curtains in and then your cat.

When the judging begins you just sit back and watch it all going on. You can order a catalogue when you register for the show. These are good to see whose cat is whose and it will give you an idea of how the classes work.

The cats are usually grouped into two or three group's i.e. long hair, shorthair, etc. and they compete against each other to be the best in that group. They also compete against the same breed and then against the class of cat i.e. adult, kitten, male, female.

They get to the end of the judging announce the winners and your done. It can take a while so you may like to take a book and some snacks. The shows have a canteen where you can buy hot & cold drinks, cakes etc and you will find that, as you meet new people, you will spend a lot of time talking to the other people at the show.

A good way to find out what goes on is to visit a show as the 'general public'. For a dollar or two you can view all of the cats and get a feel for what it is like to show your kitty.

Remember, just like owning a cat, showing is fun!

*Pamela Lanigan*

## How To Trim Your Cat's Claws

It is recommended you get a cat used to having its feet handled from an early age. This can be done by gently massaging your cat's feet. Some of my cats are less than thrilled at having their claws trimmed.

In such a case I recommend you only trim a couple of claws per session, or do as I sometimes do and gently trim them when the cat is napping.



- Hold the cat's paw in your hand with your fingers on the underside and your thumb on the top.
- Gently apply a forward pressure to one toe. This causes the claw to come out of the sheath, which makes it more visible.

### ***Cat Claw 1***

Notice how in the middle of the claw is pink, this is the quick and it contains blood and nerves. This must NOT be cut, as it will cause pain and bleeding. If you do accidentally cut this, apply a styptic pencil Silver Nitrate sticks or Potassium of Permanganate to the claw to stop the bleeding. If you don't have these products, ordinary household flour will do. The claw should stop bleeding in about 5 minutes.



### ***Cat Claw - Showing Quick***

There are several kinds of nail clippers you can use. I use regular nail clippers for humans, but you can also purchase clippers specifically for cat's claws, these should be available from your vet or pet supply shop. Nail clippers should be very sharp, as blunt ones will crush the nail, not cut it.

### ***Clipping cat's claw***

Aim to trim between the tip of the claw and the quick.





### **Cat's claw trimmed**

Some people trim their cat's back claws, I don't, and this is because my cats tend to wear their back claws down naturally. I trim their front claws approximately every 3-4 weeks.

---

## **Pyometra & Endometrial Hyperplasia in Cats**

Pyometra is a disease mainly of middle-aged female cats that have not been spayed. In the past, we thought pyometra was simply a uterine infection, but today, we know that it is a hormonal abnormality, and a secondary bacterial infection may or may not be present. Pyometra follows a heat cycle in which fertilization did not occur. Typically, within two to four months after the cycle, the female starts showing signs of the disease.

### **What causes pyometra?**

The two main hormones produced by the ovaries are estrogen and progesterone. An excessive quantity of progesterone, or the uterus becoming oversensitive to it, causes pyometra. In either case, cysts form in the lining of the uterus. At this point, the condition is called 'endometrial hyperplasia,' and generally, the cat will not show signs of disease.

As these cysts containing numerous secretory cells grow, large quantities of fluids are produced and released into the interior of the uterus. Bacteria commonly colonize the uterus by entering through the cervix. This produces an even greater response by the body, as it showers additional fluid and white blood cells into the affected organ. The condition is then called 'pyometra.' If the lining of the uterus becomes infected, the condition is termed 'endometritis.'

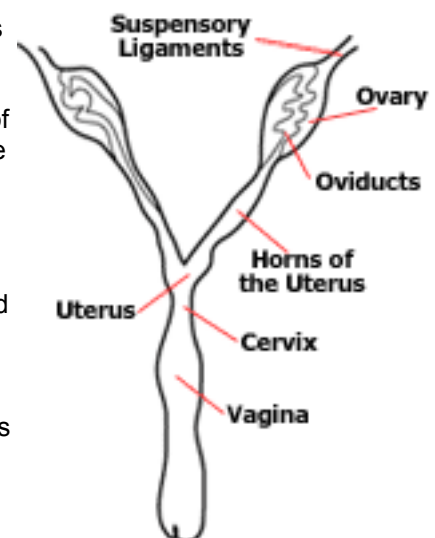
This fluid, along with a thickening of the walls of the uterus, brings about a dramatic increase in the overall size of this organ. The uterus is made up of a body with two horns. In the unaffected cat, the horns are smaller than a common pencil. However, in cases of pyometra, they become large, sac-like pouches the circumference of cucumbers and 12 inches long. As the disease continues, fluid moves from the uterus to the vagina and then spills out onto the vulva causing the animal to lick this area in an attempt to keep itself clean.

After a while, the cervix closes. This effectively traps all of the fluid within the uterus. Still, the body continues to transfer more fluid and white blood cells into the organ, causing even further dilatation and growth. The uterus can rupture, spilling its contents into the abdominal cavity. If this occurs, the cat usually dies in less than 48 hours. In most cases, this does not happen.

The body will attempt to eliminate the problem by carrying the wastes and excess fluid through the bloodstream to the kidneys.

However, the amount of material in a cat with pyometra is too great to be eliminated in this fashion, overloading the kidney system. The normal toxins that should be excreted from the body build up, and the animal goes into uremic poisoning. Untreated, she will die from kidney failure.

### **Symptoms**



The most common sign is a white/yellow or blood-tinged discharge from the vulva. The cat will lick at her vaginal area while the cervix is still open and the uterus is discharging a white fluid. The abdomen may appear distended and the cat may vomit, not eat, and become lethargic. Most dogs drink excessive quantities of water (polydipsia) and urinate large amounts frequently (polyuria); this is less common in cats. Some cats will have a fever and some may become dehydrated. If blood work is done, she will show an elevated white blood cell count, and some will have a mild anemia.

### **Treatment**

Since toxicity may develop very quickly in cats with pyometra, it needs to be treated promptly. Cats will receive intravenous fluids, usually for several days, and antibiotics. In most cases, the preferred treatment is a complete ovariohysterectomy (spay). This removes the ovaries, oviducts, uterus, and all associated blood vessels. These animals can be a surgical challenge because of their poor overall condition. In some females valued for breeding, prostaglandin and antibiotic therapy may be tried instead of surgery. The prostaglandin is given for 3-5 days and causes the uterus to contract and expel the fluid. In mild cases, when the cervix is still open and the fluid is draining, the success rate is excellent. Prostaglandins, however, can have side effects including panting, vomiting, urination, and defecation. In some queens, whose condition is unstable, the side effects are too severe and the treatment needs to be discontinued.

### **Prevention**

The best prevention of pyometra is to have all female cats spayed at or before six months of age. If the cat is used for breeding, then spaying the queen after she is past her breeding years is highly recommended. Pyometra is a fairly common and serious problem and is just one of many compelling reasons to have your female pet spayed at an early age.

*Reference: Drs. Foster & Smith at [peteducation.com](http://peteducation.com)*

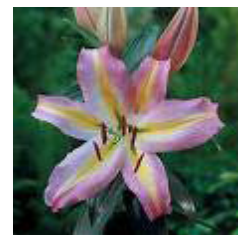
---

## Lily Intoxication in Cats

**Jody Braddock, Joanna White and Richard Malik**

*Faculty of Veterinary Science and the Post Graduate Foundation in Veterinary Science,  
The University of Sydney, New South Wales, 2006*

Although lilies are flowers commonly used in floral arrangements, and cats often have access to them, most cat owners and florists, and indeed many veterinarians are unaware of lily intoxication as a potential cause of kidney (renal) failure in cats. This is unfortunate as lilies are becoming especially popular as a gift, and the flowers that are sold are exceedingly toxic to cats.



The key to successful treatment of these cats is early recognition of possible ingestion, and aggressive management of the ensuing renal failure. In fact, lily intoxication should be considered as a diagnostic possibility for any cat, regardless of age, suffering kidney failure of sudden onset. More importantly, prevention is much better than attempted cure, so it is in the interests of cat owners and cat lovers to make the danger of lily ingestion well known in the wider community.

Indoor cats, and especially kittens, may be drawn to floral arrangements, as they are a novel feature in an otherwise very familiar environment that often lacks other forms of vegetation. In the course of investigating the flowers, the cats may play with and sometimes chew parts of the plant. This could easily go unnoticed by owners, or may occur while the cat is alone at home. Similarly, cats with access to lilies growing outdoors in domestic gardens may not be observed to contact the plant, so careful questioning regarding the presence of the plant or flowers is always warranted when a vet is investigating kidney failure in cats, especially when it develops suddenly.

The toxic substance in lilies that injures the kidneys has not been identified, but all parts of the lily are poisonous – flowers, stamen, stem, leaves and roots. The toxic dose is unknown, but thought to be reached by ingestion of, or mouthing, very small amounts of material.

Cats seem to be unique amongst domestic pets in their susceptibility to this intoxication, possibly due to differences in their metabolism. For the same sort of reason, cats also can be easily poisoned by human medications such as paracetamol, ibuprofen and aspirin, and these too are lethal for cats in doses that would be safe for humans. Interestingly, dogs that consume large amounts of the plant develop only mild gastrointestinal signs, while rats and rabbits show no signs of toxicity at all.



## Signs of lily poisoning

The first signs of toxicity are vomiting, depression and loss of appetite. The onset is usually within 2 hours, and may subside by 12 hours. Although an affected cat is likely to remain depressed, the patient may appear to improve, briefly (with or without symptomatic treatment) as the gastrointestinal signs abate. It is likely, however, that acute renal failure will develop within 24 to 72 hours at which time the cat will become critically ill.

At this time the patient may drink much more than usual, or become extremely dehydrated. Your vet might feel painful, enlarged kidneys on physical examination at this stage. If untreated, cats die in 3 to 7 days.

## Diagnosis and treatment

Your vet can diagnose the presence of acute renal failure using blood tests, urine tests, and an ultrasound examination and possibly a needle biopsy of the kidneys. Although there is no specific test that can identify lily intoxication as the cause with certainty, there are characteristic laboratory findings that make the diagnosis likely if supported by evidence of lily ingestion. The treatment for lily intoxication is intensive and expensive, typically involving intravenous fluid therapy and hospitalisation for several days. Currently, this would represent a cost in excess of \$1000 to most owners, and even with the most diligent therapy, a successful outcome is not assured.

## Summary

Lily toxicity should always be considered in any case of acute renal failure in cats. Ingestion of small amounts of plants or flowers of the Liliaceae family can cause severe, irreversible kidney failure and death in cats within 3 to 7 days of exposure. Cats should therefore never have access to flowers or plants of this family.

---

## Don't miss the warning signs

*This article is provided by one of our Registered Breeders who has been successfully raising healthy happy pedigree kittens for 30+ years. Please take it as a general guide only.*

Research shows that cats feel pain just like we do. But they tend to hide their pain—so just because they don't show you obvious signs of pain, doesn't mean they aren't suffering or in distress. It's up to you to know the signs that something is wrong and advocate for them by getting them the help they need.

When cats aren't feeling well they give us clues. The clues may be physical or behavioural, or both. Some signs require immediate veterinary attention like respiratory problems or changes in breathing; straining to urinate, defecate or crying in the litter box; dilated pupils, or having any dramatic changes in behaviour from normal. Some signs may increase over time with illness and won't go away until your cat is diagnosed and treated by your veterinarian.

Watch for any of the following changes in your cat's physical appearance, habits, behaviour or health condition.

Remember, you are your cat's advocate and voice, so be on the lookout for your cat's signals that something is wrong. Here are the warning signs:

### Physical Signs

**Dilated Pupils** Cats with dilated pupils (other than short-term dilation with darkness or stress) and remaining dilated can be a symptom of a serious health problem—and should be immediately seen by a vet. Dilated pupils can signify serious infection, head or brain trauma or tumour, poisoning, or disease and will need diagnostic tests to determine the cause.

**Respiratory Problems** Normal breathing for cats is even and smooth. Any changes in your cat's breathing is serious and needs immediate attention by your vet, including rapid breathing at rest, panting, shallow breathing, a very slow rate of breathing, laboured breathing, wheezing, noisy breathing—or crying in pain or distress. All breathing changes need veterinary attention immediately.

**Pale or White Gums** Check your cat's gums for signs of illness periodically. Healthy gums are pink (or if your cat is black, gums may be black). If your cat has very pale gums that aren't pink or are white, time to take your cat to the vet. This can signify a loss of blood flow or circulation, shock, or anaemia. White or pale gums need [immediate attention by your vet](#).

**Sitting Hunched with Back Arched** If you see your cat sitting in a crouched position with his back arched, nose to the floor, front paws folded under body—this is a sign that he's in pain and suffering.

**Not Eating, Loss of Appetite, Vomiting** If your cat suddenly loses his appetite or stops eating, or refuses food for up to 2-3 days, heads up he's not feeling well and needs to see a vet. A cat that stops eating can cause liver damage (hepatic lipidosis or fatty liver disease), which can lead to liver failure and death, so this sign requires immediate attention by your vet. Loss of appetite can indicate infection, kidney failure, intestinal problems, cancer, pancreatitis, or even dental problems.

**Changes in Appetite** Changes in appetite usually signify some underlying illness. If your cat is eating and drinking more than usual, it may be a sign of diabetes (also loss of appetite in later stage) or hyperthyroidism—both are serious diseases that need to be treated.

**Increased Water Consumption** If your cat is drinking way more water than normal and always seems to be at the water bowl, this can be a sign of illness like diabetes, hyperthyroidism, and kidney disease. These are treatable diseases.

**Weight Loss – Sudden or Gradual** Has your cat lost weight suddenly or been losing weight gradually over the past few months? It's good to know your cat's weight and to weigh them periodically, so you know if they have lost weight. Weight loss can be a sign of many illnesses including cancer, diabetes, FIP, gastrointestinal issues, parasites, dental issues, and can happen in old age.

**Changes in Coat/Fur** When your cat's coat changes in appearance from being shiny to having a dull/matte finish, or it becomes oily and clumpy, or he's suddenly losing hair—these are signs that something's not right with your kitty.

**Coughing, Sneezing, Runny Nose** These are signs of upper respiratory or bronchial infection and can quickly become serious. Cats can lose their appetite and become dehydrated quickly with an upper respiratory infection, since they lose their sense of smell and are congested. So to avoid further infection and health problems, see your vet.

**Bad Breath** Bad breath can [signal dental or gum disease](#), which can trigger more serious health problems—or it can be a sign of an underlying health issue. In either case, time to have it diagnosed.

## **Behavioural Signs**

**Hiding or Isolating, Lethargic** Does your cat suddenly want to be left alone? Is he less social or hiding lately, seeking isolation? Is he more lethargic? This can be a definite sign something is wrong.

**Vocalization – Growling, Hissing** Is your cat hissing or growling when you touch him, pick him up or move him? Or has he become more aggressive, more irritable and short-tempered lately? Is he avoiding your touch? If you notice any significant change in vocalization—your cat could be in pain.

**Litter Box Changes** If your cat is straining to urinate and not peeing—this is an emergency and your cat should be rushed to the vet. He could have a [urinary tract blockage](#), kidney stone, crystals, or cystitis and all are extremely painful and dangerous. If your cat is suddenly not using the litter box, going outside the box, or hiding in the litter box—all are signs something's wrong.

**Grooming Changes** Cats groom themselves daily, so if your cat has stopped grooming or his fur has become suddenly matted—there's an underlying reason. If your cat's grooming is focused on a specific area and they are constantly grooming in that one place—this can be a sign of pain in that particular place.

If your cat exhibits one or more of these signs, it's time to make an [appointment for a veterinary examination](#) as soon as possible. Don't let your cat suffer in pain. Remember, he's counting on you and you're all he has.



# CatsWA Breeders Directory 2017

<p><b>ABYSSINIAN</b></p> <p><i>ABRASHKA</i> Tara Carle Tel: (08) 6191 0410 Mob: 0411 083 655 <a href="mailto:taracarle2003@yahoo.com.au">taracarle2003@yahoo.com.au</a></p> <p><i>JOYLINCAR</i> All Colours Carole Carroll Mob: 0403 778 233 <a href="mailto:joylincar@inet.net.au">joylincar@inet.net.au</a> <a href="http://www.joylincarsomalis.com">www.joylincarsomalis.com</a></p> <p><i>KIMARA</i> Lucy Nikiforos Tel: (08) 9419 7473 <a href="mailto:kimara@inet.net.au">kimara@inet.net.au</a> <a href="http://www.kimara.inet.net.au">www.kimara.inet.net.au</a></p> <p><b>AUSTRALIAN BOMBAY see MANDALAY</b></p> <p><b>BIRMAN</b></p> <p><i>MONALEA</i> Most Colours Monica Clark Tel: 6458 4071 <a href="mailto:monalliee_56@hotmail.com">monalliee_56@hotmail.com</a></p> <p><b>BRITISH SHORTHAIR</b></p> <p><i>BRITZOBEAUTY</i> Julie &amp; Emily Pickens Tel: (08) 9377 4333 <a href="mailto:vegimite62@hotmail.com">vegimite62@hotmail.com</a> <a href="http://www.britzobeautey.webs.com">www.britzobeautey.webs.com</a></p> <p><i>CUDDLETON</i> Pamela Lanigan <a href="http://www.cuddleton.com">www.cuddleton.com</a></p>	<p><b>BURMESE</b></p> <p><i>CHAROB</i> Most Colours Charmaine &amp; Jodie Heath Tel: (08) 9394 0008 <a href="mailto:charob.burmese@live.com.au">charob.burmese@live.com.au</a> <a href="http://www.charobburmese.com">www.charobburmese.com</a></p> <p><i>CHERIE</i> All Colours Andrea Dey Tel: (08) 9274 0906 Mob: 0459 306 250</p> <p><i>FOXGLOVE</i> Lelania Timms Mob: 0420 618 334 <a href="mailto:lani72@live.com.au">lani72@live.com.au</a></p> <p><i>ICEBLU</i> Most Colours <b>Stud Service</b> David Radford Tel: (08) 9455 4740 Mob: 0423 288 704 <a href="mailto:drado@inet.net.au">drado@inet.net.au</a></p> <p><i>MALINGBU</i> All Colours <b>Stud Service</b> Margaret &amp; Richard Bush Tel: (08) 9535 3239 Mob: 0401 192 157 <a href="mailto:margaret_bush@outlook.com">margaret_bush@outlook.com</a></p> <p><i>NATMAC</i> Natalie McNamara Mob: 0403 318 804 <a href="mailto:natmacburmese@gmail.com">natmacburmese@gmail.com</a> <a href="http://www.burmesenatmac.wordpress.com">www.burmesenatmac.wordpress.com</a></p>	<p><b>BURMESE (cont)</b></p> <p><i>NICODY</i> Most Colours Diana Nixon Mob: 0417 913 803 <a href="mailto:dlnixon@bigpond.net.au">dlnixon@bigpond.net.au</a></p> <p><i>RIORDAN</i> Nick Skeet Tel: (08) 9455 5656 Mob: 0423 821 303 <a href="mailto:riordanburmese@yahoo.com.au">riordanburmese@yahoo.com.au</a> <a href="http://www.riordanburmese.com">www.riordanburmese.com</a></p> <p><i>ROCANROLE</i> All Colours Carole Galli Tel: (08) 9455 1481 <a href="mailto:admin@roellencattery.com.au">admin@roellencattery.com.au</a> <a href="http://www.roellencattery.com.au">www.roellencattery.com.au</a></p> <p><i>THIBAWBURMESE</i> Joan McNickle Mob: 0427 552 561 <a href="mailto:joanmcnickle@hotmail.com">joanmcnickle@hotmail.com</a></p> <p><i>ULTIMA</i> Brown/Blue/Choc &amp; Lilac <b>Stud Service</b> Most colours available Joyce McLeavy Tel: (08) 9398 5576 Mob: 0407 427 130 <a href="mailto:joycepmcleavy@bigpond.com">joycepmcleavy@bigpond.com</a></p> <p><b>BURMILLA</b></p> <p><i>MESMEREYES</i> Most Colours Carole Galli Tel: (08) 9455 1481 <a href="mailto:admin@roellencattery.com.au">admin@roellencattery.com.au</a> <a href="http://www.roellencattery.com.au">www.roellencattery.com.au</a></p>
---	--	---

## DEVON REX

*PIXIEMINX*  
Kylie Purcell  
Mob: 0476 612 825  
[silverskies@hotmail.com](mailto:silverskies@hotmail.com)

## EXOTIC

*MURDOCH (WA)*  
Most Colours  
Ann & Norman Chandler  
Tel: (08) 9337 3002

## FOREIGN WHITE

*ASHROSE*  
**Stud Service**  
Margaret Cowell  
Tel: (08) 9417 7469  
Mob: 0417 967 945  
[margaret224@iprimus.com.au](mailto:margaret224@iprimus.com.au)

*MALINGBU*  
White  
**Stud Service**  
Margaret & Richard Bush  
Tel: (08) 9535 3239  
Mob: 0401 192 157  
[margaret\\_bush@outlook.com](mailto:margaret_bush@outlook.com)

*RIORDAN*  
Nick Skeet  
Tel: (08) 9455 5656  
Mob: 0423 821 303  
[riordanburmese@yahoo.com.au](mailto:riordanburmese@yahoo.com.au)  
[www.riordanburmese.com](http://www.riordanburmese.com)

## MAINE COON

*DIRTYPAWS*  
All Colours  
Delaine Hall  
Mob: 0406 052 322  
[delva@01hotmail.com](mailto:delva@01hotmail.com)  
[www.dirtypawsmainecoons.net](http://www.dirtypawsmainecoons.net)

## MANDALAY

*RAVENCLAW*  
Black  
Carole Galli  
Tel: (08) 9455 1481  
[admin@roellencattery.com.au](mailto:admin@roellencattery.com.au)  
[www.roellencattery.com.aau](http://www.roellencattery.com.aau)

## OCICAT

*FALCONBLADE*  
**Stud Service**  
Yves Colliere  
Text: 0417 368 168  
[yvesfrans46@gmail.com](mailto:yvesfrans46@gmail.com)

## ORIENTAL

*ASHROSE*  
**Stud Service**  
Margaret Cowell  
Tel: (08) 9417 7469  
Mob: 0417 967 945  
[margaret224@iprimus.com.au](mailto:margaret224@iprimus.com.au)

*CHICAS*  
**Stud Service**  
Susan Game  
Mob: 0409 082 395  
[ssgame@iinet.net.au](mailto:ssgame@iinet.net.au)  
[www.chicascats.iinet.net.au](http://www.chicascats.iinet.net.au)

## PERSIAN

*MURDOCH (WA)*  
Most Colours  
Ann & Norman Chandler  
Tel: (08) 9337 3002

*RICHDEAN*  
Deanne Kestel  
Mob: 0400 314 071  
[www.richdeanpersians.webs.com](http://www.richdeanpersians.webs.com)

## RAGDOLL

*DIAMONDDOLL*  
**Stud Service**  
Brooke Reed  
Tel: (08) 9390 0881  
Mob: 0418 788 845  
[brooke@diamonddollragdolls.com](mailto:brooke@diamonddollragdolls.com)  
[www.diamonddollragdolls.com](http://www.diamonddollragdolls.com)

*FUREVERAGS*  
Most Colours  
Margaret Elford  
Tel: (08) 9300 9442  
Mob: 0406 270 277  
[margaret@fureverags.com](mailto:margaret@fureverags.com)

*LOVEUFOREVER RAGDOLLS*  
Most Colours  
Janis Thompson  
Mob: 0414 563 107  
[loveuforeverragdolls@hotmail.com](mailto:loveuforeverragdolls@hotmail.com)  
[www.loveuforeverragdolls.com](http://www.loveuforeverragdolls.com)

*MEWSINGS*  
Most Colours & Patterns  
**Stud Service**  
Kirsty Connell  
Tel: (08) 9455 1230  
[mewsingsragdolls@yahoo.com](mailto:mewsingsragdolls@yahoo.com)  
[www.mewsings.breedsite.com](http://www.mewsings.breedsite.com)

*RAGGIES*  
Seal/Blue/Choc & Lilac  
All Patterns  
Gloria & Norm Green  
Tel: (08) 9574 4506  
[elcid651@gmail.com](mailto:elcid651@gmail.com)  
[www.raggdollcats.com](http://www.raggdollcats.com)

*SINANVANYA*  
Blue/Seal & Choc  
Michelle Harris  
Mob: 0413 394 625  
[sinanvanya@iinet.net.au](mailto:sinanvanya@iinet.net.au)  
[www.sinanvanya.coom](http://www.sinanvanya.coom)

## **RAGDOLL (cont)**

### *SUMMERSKYE*

Susan Goodall  
Mob: 0407 479 931  
[susanskysum1@bigpond.com](mailto:susanskysum1@bigpond.com)

### *WOMBLETOWN*

Sonia Dorling  
Mob: 0409 103 670  
[soniadorling@hotmail.com](mailto:soniadorling@hotmail.com)

## **RUSSIAN**

### *GOLASH*

Mel Gould  
Tel: 9394 0467  
Mob: 0419 993 765  
[rgo69697@bigpond.net.au](mailto:rgo69697@bigpond.net.au)  
[www.golash-russians.com](http://www.golash-russians.com)

### *KIMARA*

Lucy Nikiforos  
Tel: (08) 9419 7473  
[kimara@iinet.net.au](mailto:kimara@iinet.net.au)  
[www.kimara.iinet.net.au](http://www.kimara.iinet.net.au)

### *PYRET*

Blue/Black & White  
**Stud Service**  
Betty Payne  
Tel: (08) 9525 0071  
[pyret@bigpond.net.au](mailto:pyret@bigpond.net.au)

### *TACHALI*

Maree Carle  
Tel: (08) 9317 4477  
Mob: 0408 925 205  
[tlcpets@iinet.net.au](mailto:tlcpets@iinet.net.au)  
[www.tlcpets.com.au](http://www.tlcpets.com.au)

## **RUSSIAN (cont)**

### *TWILI*

Amber Gould  
Mob: 0423 490 122  
Located in Joondalup  
[rgo69697@bigpond.net.au](mailto:rgo69697@bigpond.net.au)  
[www.golash-russians.com](http://www.golash-russians.com)

## **SIAMESE**

### *ASHROSE*

**Stud Service**  
Margaret Cowell  
Tel: (08) 9417 7469  
Mob: 0417 967 945  
[margaret224@iprimus.com.au](mailto:margaret224@iprimus.com.au)

### *CHICAS*

Most Colours  
**Stud Service**  
Susan Game  
Mob: 0409 082 395  
[ssgame@iinet.net.au](mailto:ssgame@iinet.net.au)  
[www.chicascats.iinet.net.au](http://www.chicascats.iinet.net.au)

### *MALINGBU*

Seal/Blue/Choc Solid Points & Tabby Points  
**Stud Service**  
Margaret & Richard Bush  
Tel: (08) 9535 3239  
Mob: 0401 192 157  
[margaret\\_bush@outlook.com](mailto:margaret_bush@outlook.com)

### *RIORDAN*

Nick Skeet  
Tel: (08) 9455 5656  
Mob: 0423 821 303  
[riordanburmese@yahoo.com.au](mailto:riordanburmese@yahoo.com.au)  
[www.riordanburmese.com](http://www.riordanburmese.com)

## **SIBERIAN**

### *ZHIVAGO SIBERIANS*

Janis Thompson  
Mob: 0414 563 107  
[janis@zhivagosiberians.net](mailto:janis@zhivagosiberians.net)  
[www.zhivagosiberians.net](http://www.zhivagosiberians.net)

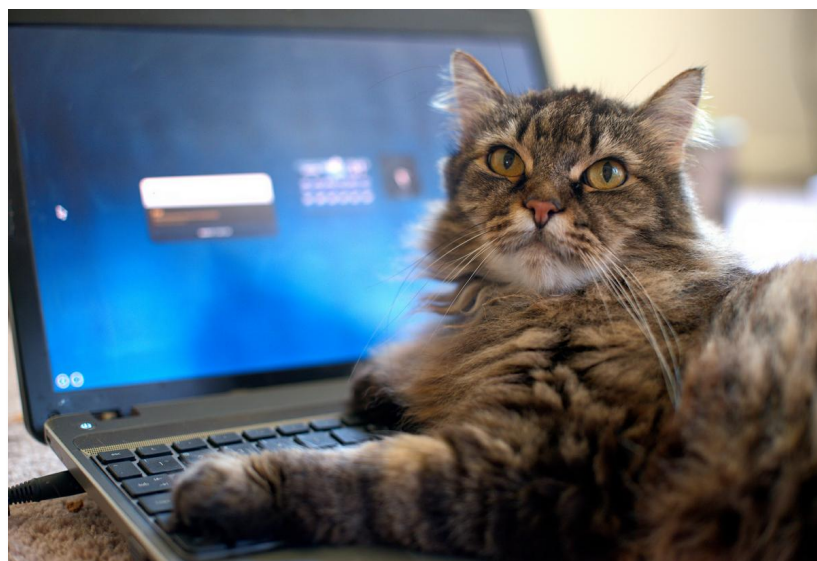
## **SOMALI**

### *JOYLINCAR*

All Colours  
Carole Carroll  
Mob: 0403 778 233  
[joylinicar@iinet.net.au](mailto:joylinicar@iinet.net.au)  
[www.joylinicar-somalis.com](http://www.joylinicar-somalis.com)







That's the end of this edition of Catcall. We hope you enjoyed it and that you look forward to the next issue. If you have any articles for consideration in the next issue please forward them to the CatsWA office or the Council. Finally thank-you to all those who have contributed to this edition.